



TK International  
020 7794 8700  
www.t-k.co.uk

Residential Sales  
Residential Lettings  
Property Management

Sales Office:  
9 Heath Street  
Hampstead  
London NW3 6TP  
E: sales@t-k.co.uk

Lettings Office:  
16-18 Heath Street  
Hampstead  
London NW3 6TE  
E: lettings@t-k.co.uk

tk.international  
TK International  
TK International

Est.  
1998



## Wimpole Street Marylebone W1G

A well presented apartment available to rent in Marylebone, W1. Found on the first floor, this is a well-proportioned apartment with accommodation comprising a generous reception room, a separate kitchen with fitted appliances, and two bedrooms, one of which has an en-suite bathroom and a further family bathroom. Located on Wimpole Street, the property benefits from a prime central location, only moments away from the stylish shops and popular restaurants of Marylebone Village and Mayfair. Regent's Park and Hyde Park's green open spaces are also close. Excellent transport links exist from Bond Street, Oxford Street, Baker Street and Marylebone stations.

**£1,153 Per Week**

**SOLE AGENT**







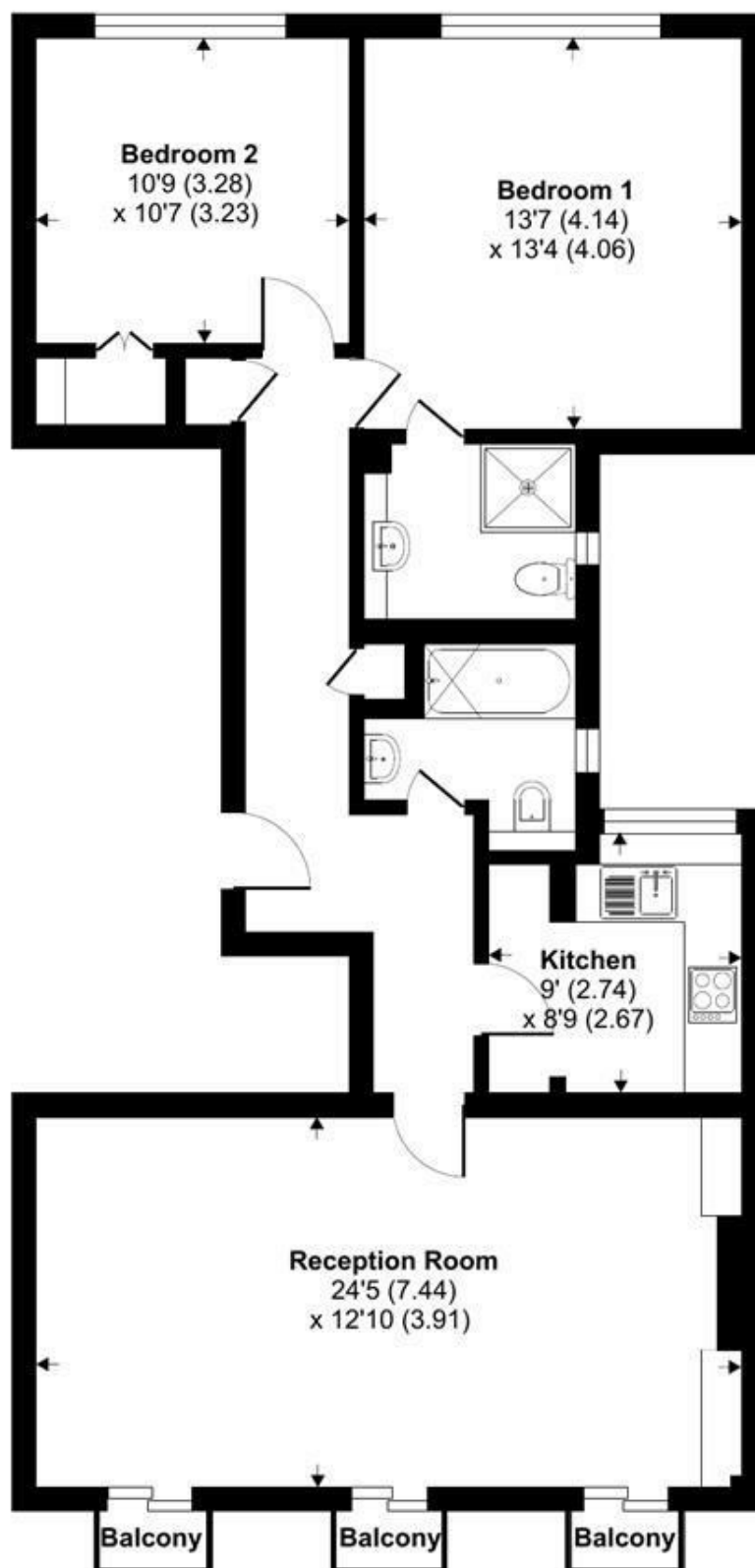




# Wimpole Street, London, W1G

Approximate Area = 944 sq ft / 87.7 sq m (includes garage)

For identification only - Not to scale



FIRST FLOOR



Floor plan produced in accordance with RICS Property Measurement Standards incorporating International Property Measurement Standards (IPMS2 Residential). © nichecom 2023.  
Produced for TK (Lettings) Ltd. REF: 979490